



# YSI Biochemistry Analyzer Selection Guide



a xylem brand

# YSI Product Selection Guide

## 1. Choose Chemistries

Use the Chemistry Compatibility Chart to select your chemistries. Keep in mind that some chemistries have mandatory partner chemistries and other chemistries must be run alone.

### **Mandatory partner chemistries:**

- Xylose (must be run with Glucose)
- Sucrose (Glucose)
- Glutamine (Glutamate)
- Ammonium (Potassium)

### **Solitary chemistries (must be run alone on a module):**

- Methanol
- Hydrogen Peroxide

## 2. Select Instrument

Use the Instrument Selector Flow Chart to determine the number and type of modules you need. Then, use this information to select your instrument.

### **1 module:**

- 2900D
- 2900M
- 2950D-0

### **2 modules:**

- 2950D-1
- 2950D-4

### **3 modules:**

- 2950D-2
- 2950D-3

## 3. Add Accessories

Use the Accessories page to identify accessories like:

- Bottle Racks with Reagent Level Sensing
- Printer
- Sample racks
- Sample multi-well plates

## 4. Select a Reagent Starter Kit

Typically includes:

- Buffer
- Membrane
- Standard for calibration
- Standard for linearity
- Potassium ferrocyanide (FCN)
- NaCl

# 1. Choose Chemistries

Each chemistry will run on a module containing 2 sensors. Chemistries may require different sensor types or buffers to run properly. Use the chart shown here to select compatible chemistry pairs for each module.

## Module 1

Chemistries:

---



---

## Module 2

Chemistries:

---



---

## Module 3

Chemistries:

---



---

## Chemistry Compatibility Chart

### Can be Run Together:

First chemistry	Compatible with:
Choline	Glucose Glutamate Lactate
Ethanol	Glucose Lactate
Ethanol HC	Glucose
Galactose	Glucose
Glucose	Choline Ethanol Ethanol HC Galactose Glutamate Glycerol Lactate Lactose Sucrose Xylose
Glutamate	Choline Glucose Glutamine Lactate
Glycerol	Glucose
Lactate	Choline Ethanol Glucose Glutamate
Lactose	Glucose

### Must be Run Together:

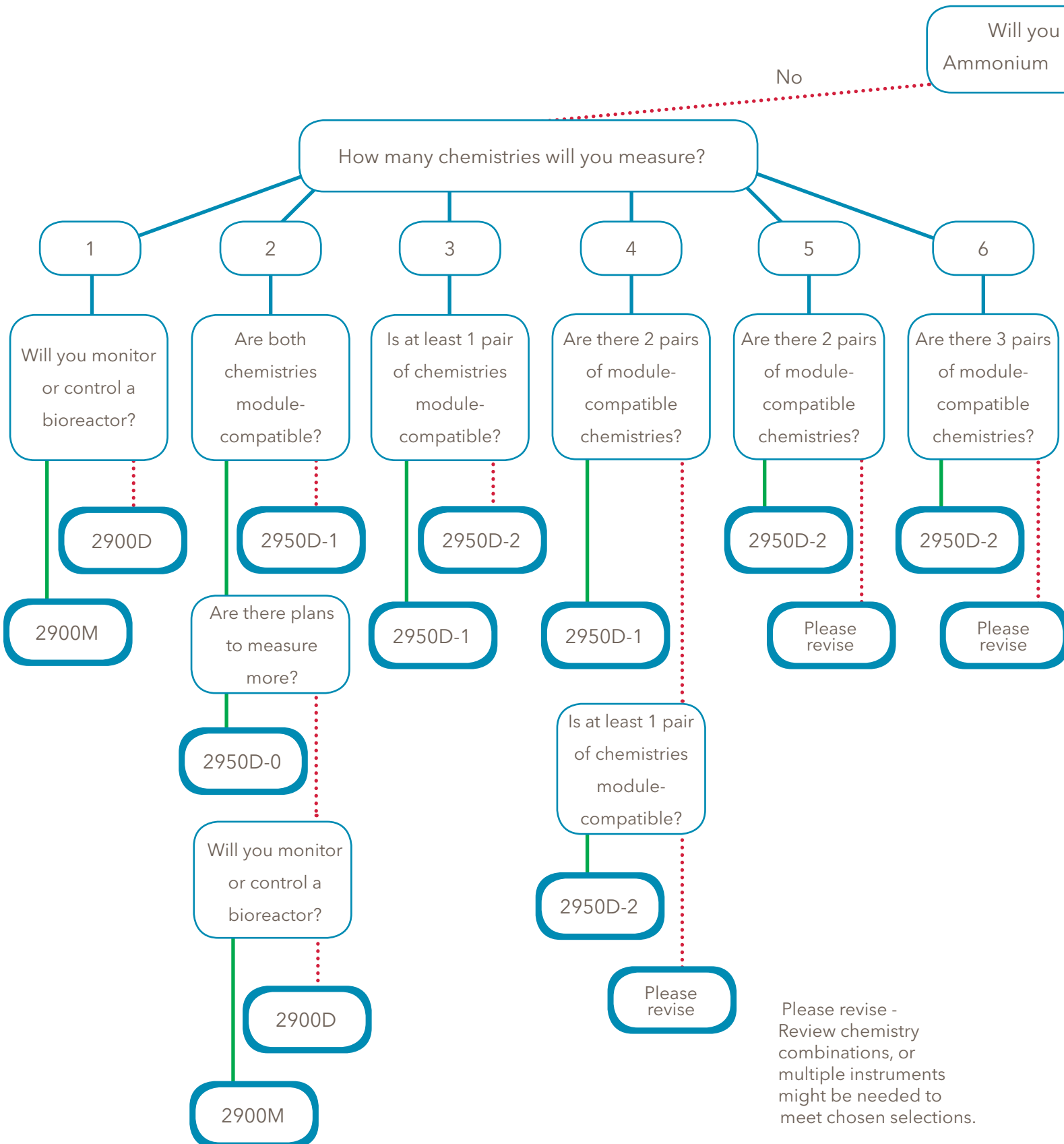
First chemistry	Must be run with:
Ammonium	Potassium
Glutamine	Glutamate
Sucrose	Glucose
Xylose	Glucose

### Must be Run Alone:

First chemistry	Second chemistry:
Methanol	None
Hydrogen peroxide	None

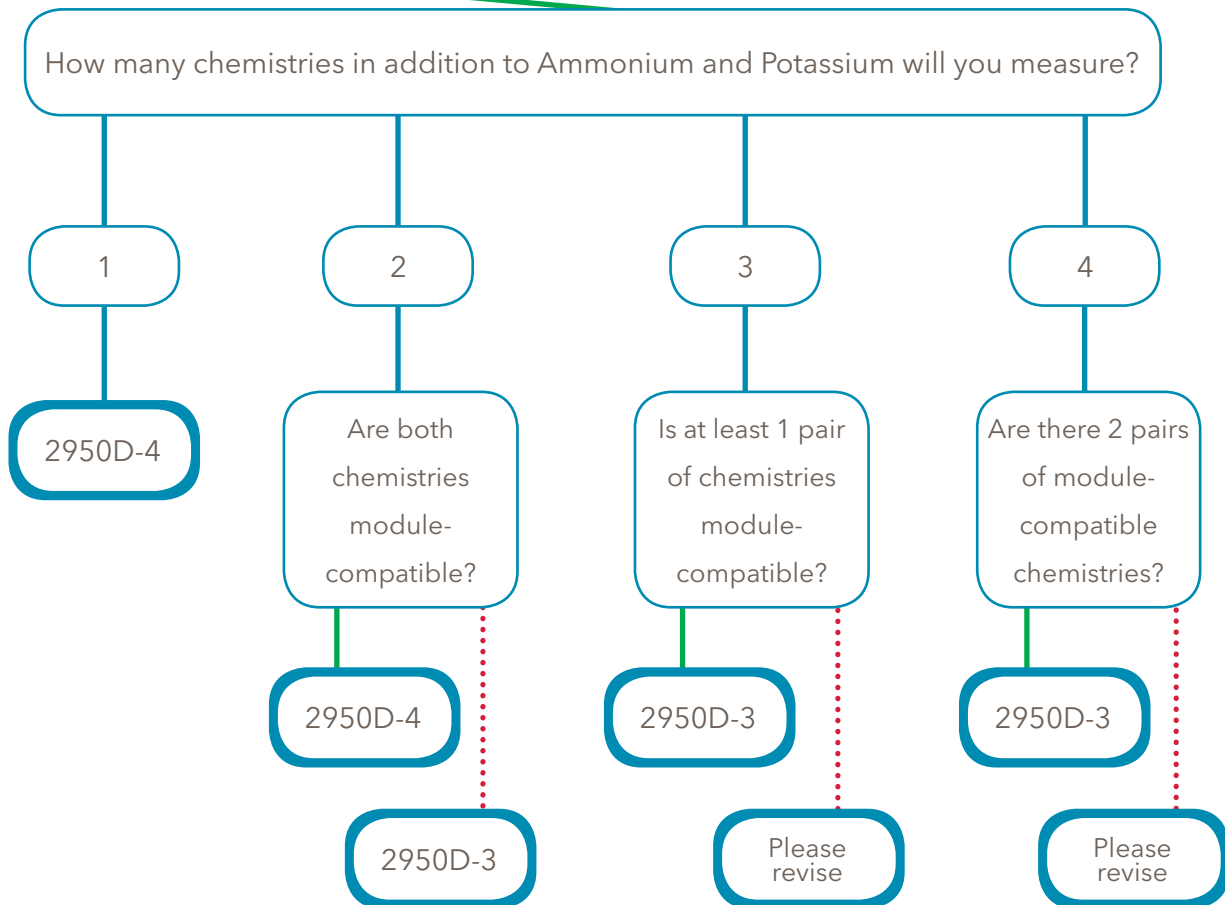
## 2. Select Instrument

Use the flowcharts on these 2 pages to determine the instrument model you should order.



measure  
or Potassium?

— Yes  
..... No



Please revise - Review chemistry combinations, or multiple instruments might be needed to meet chosen selections.

### Instrument Selection Summary

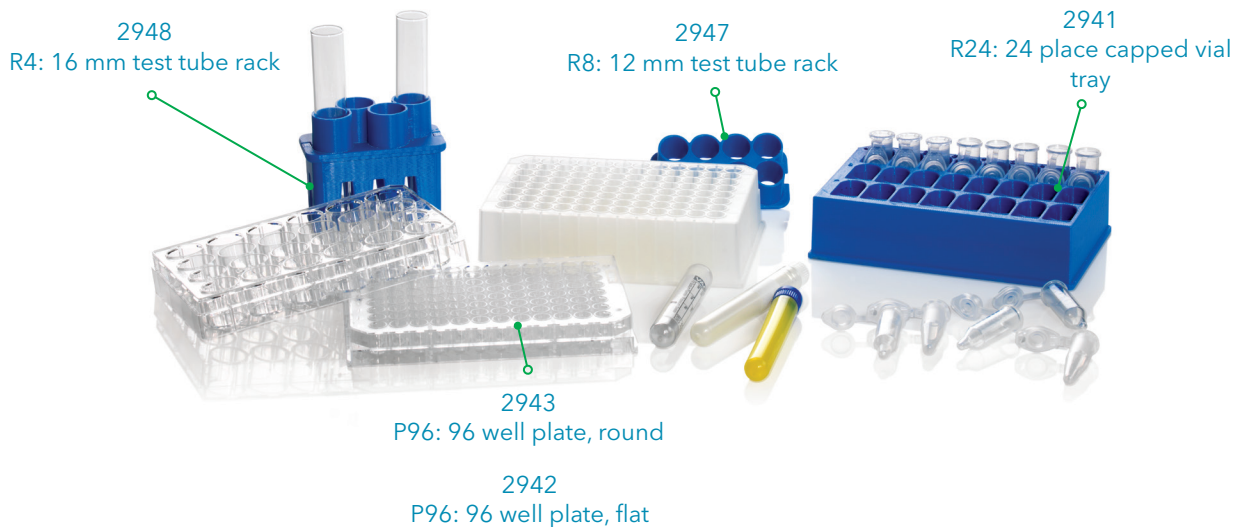
Model	Description
2900D	Biochemistry Analyzer with One BIOSENSOR Module
2900M	Online Monitoring and Control System with One BIOSENSOR Module
2950D-0	One BIOSENSOR Module
2950D-1	Two BIOSENSOR Modules

Model	Description
2950D-2	Three BIOSENSOR Modules
2950D-3	Two BIOSENSOR and One ISE Module
2950D-4	One BIOSENSOR and One ISE Module

### 3. Add Accessories



Product Number	Description
2901	Printer
2936	Bottle Rack with Reagent Level Sensing (2 chambers)
2938	Bottle Rack with Reagent Level Sensing (1 chamber)
2941	R24: 24 Place capped vial tray
2942	P96: Flat bottom 96 well plate
2943	P96: Round bottom 96 well plate
2944	X-Pierce Films (Cover 96 well plates)
2945	R24: 12 mm Glass vial tray
2947	R8: 12 mm Test tube rack
2948	R4: 16 mm Test tube rack
2988	Preventative Maintenance Kit (2900)
2989	Preventative Maintenance Kit (2950)



## 4. Select a Starter Kit

### One Chemistry

Item Number	Description
2810	Choline Starter Kit
2811	Ethanol Starter Kit
2812	Ethanol HC Starter Kit
2813*	Galactose Starter Kit
2814	Glucose Starter Kit
2815	Glutamate Starter Kit
2816	Glycerol Starter Kit
2817*	Hydrogen Peroxide Starter Kit
2818	Lactate Starter Kit
2819	Lactose Starter Kit
2820	Methanol Starter Kit

### Two Chemistries

Item Number	Description
2821	Ammonium/Potassium Starter Kit
2822	Glucose/Choline Starter Kit
2823	Glucose/Ethanol Starter Kit
2824	Glucose/Ethanol HC Starter Kit
2825*	Glucose/Galactose Starter Kit
2826	Glucose/Glutamate Starter Kit
2827	Glucose/Glycerol Starter Kit
2828	Glucose/Lactate Starter Kit
2829	Glucose/Lactose Starter Kit
2830	Glucose/Sucrose Starter Kit
2831	Glucose/Xylose Starter Kit
2832	Lactate/Choline Starter Kit
2833	Lactate/Ethanol Starter Kit
2834	Lactate/Glutamate Starter Kit
2835	Glutamine/Glutamate Starter Kit
2836	Glutamate/Choline Starter Kit

### Three + Chemistries

Item Number	Description
2837	Glucose/Lactate/Ethanol Starter Kit
2838	Glucose/Lactate/Ammonium/Potassium Starter Kit
2839	Glucose/Lactate/Glutamine/Glutamate Starter Kit
2840	Glucose/Lactate/Ethanol/Ammonium/Potassium Starter Kit
2841	Glucose/Lactate/Glutamine/Glutamate/Ammonium/Potassium Starter Kit

\* Galactose standards and Hydrogen Peroxide standards are not provided by YSI.

# Membrane and Probe Information

Chemistry	Typical Working Life (days)	Membrane Color
Ammonium	90	No membrane
Choline	7	Orange
Ethanol	5	Green
Ethanol HC	5	Magenta
Galactose	10	White
Glucose	21	Dark red
Glutamate	7	Yellow
Glutamine	5	Magenta
Glycerol	10	Magenta
Hydrogen Peroxide	21	Yellow
Lactate	14	Gray
Lactose	10	White
Methanol	5	Black
Potassium	90	No membrane
Sucrose	10	Blue
Xylose	10	Orange



YSI 2900 and 2950 operation and technology may be covered by one or more of the following U.S. patents: 6,020,052 and 5,766,839.

For more information, please contact  
 YSI Life Sciences Technical Support at (800) 659-8865 or e-mail [support@ysi.com](mailto:support@ysi.com)



YSI Life Sciences  
 1725 Brannum Lane  
 Yellow Springs, Ohio  
 45387  
 USA  
 +1-800-659-8895  
 +1-937-767-7241  
 Fax: +1-937-767-8058  
[support@ysi.com](mailto:support@ysi.com)  
[www.ysilifesciences.com](http://www.ysilifesciences.com)

YSI (UK) Ltd.  
 119 Fleet Road  
 Fleet, Hampshire, GU51  
 3PD  
 England  
 +44-1252 819844  
 Fax: +44-1252 819544  
[UKinfo@ysi.com](mailto:UKinfo@ysi.com)  
[www.ysiuk.com](http://www.ysiuk.com)

YSI (Hong Kong) Limited  
 Room A, 11th Floor  
 Hoover Industrial Bldg.  
 26-38 Kwai Cheong Road  
 Kwai Hing New Territories  
 Hong Kong  
 +852 2891-8154  
 Fax: +852 2834-0034  
[ysi hk@ysi.com.hk](mailto:ysi hk@ysi.com.hk)